

NEW!



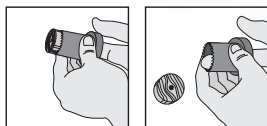
PATENTED HOLE SAW SYSTEM

UP TO **10X** FASTER CORE EJECTION! ELIMINATES THE #1 OPERATOR ISSUE WITH HOLE SAWS!

WIDE DIAMOND SLOT DESIGN
allows for increased visibility and cooling while cutting

OPEN BACK ARBOR
allows for increased visibility and cooling

QUICK CHANGE SLEEVE
and 3 pin locking system



OPEN BACK DESIGN
allows for easy plug removal

AGGRESSIVE TOOTH DESIGN
4/5 variable teeth, for fast cutting

ONE MANDREL
for hole saw diameters
3/4" to 6"

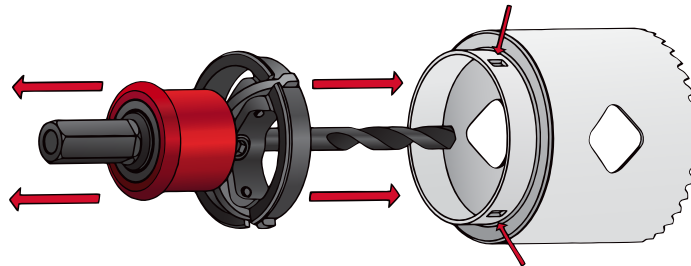


BLU-MOL[®] XTREME QUICKCORE[®]

PATENTED HOLE SAW SYSTEM

UP TO **10X** FASTER CORE EJECTION! ELIMINATES THE #1 OPERATOR ISSUE WITH HOLE SAWS!

- QuickCore's patented technology allows you to engage the quick release exposing the unique open-ended design to remove the plug immediately using no added tools.
- Wide diamond slots and open back arbors allows for increased visibility and cooling.
- Aggressive 10° positive tooth angle for faster and smoother cuts.
- 1 7/8" depth of cut.
- One mandrel for hole saw diameters 3/4" to 6" simple slide sleeve engagement.
- M42 Bi-metal construction for cutting into wood, metal, plastic and stainless steel.
- Change out hole saws FAST without the use of any tools.
- Sizes range from 3/4" to 6" diameter hole saws and 13 pc & 7 pc kits.



Watch the demo video online at Quick-Core.com

